



Phase 1, #5

St. Charles Parish Sheriff's Department

Update

Spring 2001

www.stcharlessheriff.org

A BIENNIAL PUBLICATION DEDICATED TO REPORTING THE NEWEST DEVELOPMENTS IN THE ST. CHARLES PARISH SHERIFF'S DEPT.

Postal Patron

This is a free publication mailed to St. Charles Parish residents, law enforcement professionals, community organization representatives, civic leaders and government officials. If you are not on the mailing list and would like to receive future issues, please direct your request to the Special Services Division at (504) 783-1355 or fax us at (504) 783-1195.



**SHERIFF GREG
CHAMPAGNE**

Welcome to the St. Charles Parish Sheriff's Department's fifth issue of *Update*. In it we strive to keep local residents aware of the many advancements within the department. At the same time, we want to bridge the distance between the community and law enforcement providers, facilitating the exchange of information and giving a voice to all involved in the community policing process.

This issue explores advances we've made in three major areas — policing strategies, enforcement, and community partnerships — all of which are aimed at keeping St. Charles Parish residents safe and maintaining our unique quality of life.

1.

SCPSD celebrates prison's opening

Six years ago, as St. Charles Parish's population swelled, our rural community faced unfathomable changes. New neighborhoods quickly took root, businesses

opened, and local officials braced for the future.

Although we welcome the growth, the residuals haven't been all positive.

With the influx of people, the parish experienced a dramatic increase in crime. Our 119-bed jail was operating at capacity, and non-violent offenders regularly had to be released to make space for violent ones. Our 25-year-old correctional facility was simply not able to meet our community's needs.

Building a new center — without burdening the residents of our community — became a priority for my administration.

On June 15, at 10:30 a.m., we will officially dedicate the Nelson Coleman St. Charles Parish Correctional Center in Killona. I invite the public to attend this auspicious event. A brief reception will be held following the dedication ceremony.

The opening of the 590-bed, state-of-the-art facility, which was built without raising any new taxes, marks a major turning point in our parish's history.

The St. Charles Parish Sheriff's Dept. is poised to make the transition from operating a small, quasi-rural jail to a state-of-the-art, full-service prison. The opening of the correctional center and subsequent staffing will make the SCPSD one of the state's 10 largest department's.



Nelson Coleman

**St. Charles Parish Correctional Center
Dedication Ceremony — Friday, June 15, 2001**

The additional prison space and added manpower should send a clear message to law-breakers: if you commit the crime, you will do the time.

I'm also proud to announce that I have chosen to name the correctional center after former Deputy Nelson Coleman, who died in the line of duty on Nov. 5, 1982. His dedication to the profession is memorialized, and we are forever grateful to Deputy Coleman, his family, and the hundreds of officers who put their lives in harm's way to ensure our safety.

The new correctional center touts many unique features for a Louisiana facility — the use of video conferencing between the inmates, courts and visitors are among these. With the help of the prison committee, I set out to design an efficient, cost-effective, safe and humane facility.

Still, this is a prison, not a luxury hotel for prisoners.

The concrete and steel bars are intended to separate those who choose to break the

law from society. Thieves, burglars, drug dealers and other offenders take note: as of June 15, this facility is open for business and we have plenty of space to keep you behind bars.

Gone are the days of delaying arrests on warrants or reconsidering arresting non-violent offenders because of space issues. That will no longer be a problem; there are plenty of vacancies at the inn.

As they serve their sentences, inmates will have opportunities to alter their life's track. A number of rehabilitative resources will be made available.

The jail will offer GED classes, support groups for substance abusers, and religious services.

While we don't intend to coddle those who violate the law, we do want to provide an opportunity for them to earn a high school education and learn new skills to make them better citizens when they return to society.

We've accomplished a great deal in a short time — overhauling the radio system, improving officer training, and construction of the jail itself. We continue to explore ways to improve the services the department provides citizens of our parish.

Join us Friday, June 15, as we celebrate the dedication of the correctional center.

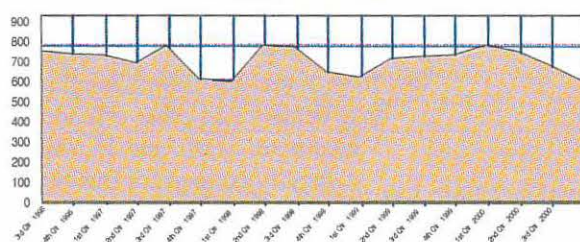
The Nelson Coleman St. Charles Parish Correctional Center will be dedicated Friday, June 15, at 10:30 a.m. A reception will be held after the ceremony. The public is invited to attend.

Departmental Strategies

2000 crime rate shows little movement

OFFENSE	1997	1998	1999	2000
Murder	4	2	2	4
Rape	9	22	13	11
Robbery	56	40	51	33
Assault	813	908	1,010	1,046
Burglary	482	427	427	475
Theft	1,232	1,194	1,121	1,046
Auto Theft	170	160	113	130
TOTAL	2,777	2,753	2,737	2,745

Quarterly UCR figures



Source: FBI Uniform Crime Reports, May 1996 - December 2000

St. Charles Parish's overall crime rate continues to hover around 2,700, which is good news considering the rapid growth the parish has experienced. With the opening of the new prison in Killona, Sheriff Greg Champagne said he expects to see the figures drop.

Crimes in seven major areas – murder, rape, assault, robbery, burglary, theft and auto theft – are tracked by the Federal Bureau of Investigation.

In all, eight more crimes were committed in 2000 as compared to the previous year. The total number of crimes – 2,745 – included decreases in robberies and rapes. The parish experienced slight spikes in assaults, thefts, auto thefts, and burglaries. Also, murders rose to four.

"We're stepping up neighborhood patrols, strictly enforcing the curfew

to decrease juvenile crime, and focusing our efforts on identified high-crime areas," Sheriff Champagne said. "We now have the jail space available; our warning to offenders is clear, 'Break the law and you will be locked up.'"

The parish's 119-bed Hahnville jail operated at capacity for a number of years. Non-violent offenders often had to be released early to create room for more violent prisoners. "With 590 more beds in Killona, we've got plenty of room now," the Sheriff said.

In the meantime, Sheriff Champagne is calling on residents to do their part. "People can help us by locking their homes and vehicles, putting valuables out of the sight, and reporting suspicious activity in their neighborhoods."

SCPSD site for satellite academy

Law enforcement academy a first-ever for St. Charles Parish

The SCPSD's Training facility in Destrehan is the host site for the Lafourche Sheriff's Dept.'s satellite academy. Historically, this is the first full-time law enforcement academy to be held in St. Charles Parish.

Forty-two officers completed the 12-week, post-certified training in April. Of those, 28 have been hired by the SCPSD to serve as correctional officers at the new parish prison in Killona.

A second academy got under way in Destrehan in late May.

"This has been a real boon for St. Charles Parish," said Sheriff Greg Champagne. "We've had the opportunity to show off our parish and our department. And since our deputies attended class here, we've saved on travel and housing expenses."

Because the majority of the students are SCPSD hires, Lafourche agreed to hold its satellite academy in Destrehan. Other regional agencies attending the academy include the Kenner, St. Gabriel and Thibodaux police departments.

In addition to providing the classroom space, a number of SCPSD's 53 certified instructors assisted with many of the blocks of training.



Sheriff Greg Champagne leads a class on the function of ja

Latest staff changes announced

Roland Ladreyt was promoted to the rank of Major. As commander of the Corrections Division, his chief role is to oversee the day-to-day operations of the parish's prison in Killona and Hahnville.

Formerly an officer with the Orleans Parish Sheriff's Office, Major Ladreyt was appointed to his warden post in St. Charles in July 1996. A 1973 graduate of Brother Martin High School, he has attended the University of New Orleans, Holy Cross College and Nicholls State University.

Major Ladreyt resides in Destrehan with his wife

MaryAnn and their seven children.

Major Sam Zinna has been tapped to command the Criminal Investigations Division, replacing Capt. Al Theriot, who retired May 1.

Major Zinna's role is to direct criminal, juvenile, special and crime scene investigations. Over the past two years, he has overseen the construction of the new correctional facility. He also serves as president of the board of commissioners for the St. Charles Parish Communications District.

A graduate of the 156th ses-



Major Roland Ladreyt



Major Sam Zinna

sion of the FBI National Academy in Quantico, Va., he is pursuing a degree in criminal justice at Southeastern La. University.

Major Zinna resides in Destrehan with his wife Kerri and daughter.

SCPSD gets tough on curfew

Parents take note: Sheriff Greg Champagne is stepping up enforcement of the curfew law.

Nationally, 25% of all crime is committed by youths ages 12-16. To reduce the risk factors associated with juvenile crime, deputies are watching for young people on the streets during the late and early morning hours.

"It may not be a simple task, but I'm asking parents for help with this growing problem," Sheriff Champagne said.

"Please see to it that your under-aged children abide by the curfew."

Likewise, residents are urged to contact the Sheriff's Dept. to report violators.

Ordinance No. 66-3-6, enacted in 1993, prohibits minors from being out between 10 p.m. and 5 a.m. Exceptions are made if the youth is: accompanied by a parent; is on a legitimate errand or emergency; or is attending a chaperoned event.

Violators can be fined \$100

and/or sentenced to 30 days in jail. Minors in violation will be picked up by deputies and returned to their parents. Citations will also be issued.

Likewise, businesses may be cited if juveniles are found loitering nearby after curfew.

"Businesses and other places are responsible too for the welfare of those individuals and could be cited," Sheriff Champagne said. "The safety of our young people is a community issue; that's why we're asking everyone to help."

Joe Ganote: 2000 Deputy of the Year

Deputy Joe Ganote was given the Sheriff Dept.'s highest honor, the 2000 Deputy of the Year.

At 2:30 a.m. last September, while patrolling Airline Highway, Deputy Ganote rescued a man whose car crashed into an abandoned vehicle and then slammed into the murky canal near I-310. As the vehicle sank, Deputy Ganote dove into the canal and, with the help of arriving deputies, pulled the driver to safety.

2.

SCPSD aggressively patrolling roads

AREA SAFETY MEASURES ARE HELPING



It may be a CPR dummy... or a Patrol deputy. Decoy units are being used to slow drivers in problem areas.

Traffic Incidents	
FATALITIES	INJURIES
2000 - 10	2000 - 167
1999 - 5	1999 - 294
1998 - 14	1998 - 384
1997 - 10	1997 - 418
1996 - 8	1996 - 425
1995 - 32	1995 - 415
1994 - 10	1994 - 415

DWI Arrests	
2000 - 220	1997 - 120
1999 - 189	1996 - 110
1998 - 182	1995 - 104



The SCPSD's Smart Trailer records vehicles' speeds. The data is then used to determine where extra traffic patrols are most needed.

Motorcycle patrols added dimension to department's Traffic Unit

The St. Charles Sheriff's Dept. continues to take an aggressive approach to policing the parish's roads. Statistics show it is paying off. The number of traffic accidents with injuries or deaths has dramatically decreased, while the number of citations and drunken driver arrests is on the rise.

Ensuring citizens' safety is a chief priority in St. Charles Parish. The Sheriff's Dept. has instituted a multi-level approach to combating speeders and dangerous driving. In addition to assigning special task forces and extra patrols, the department regularly relies on its two Smart Trailers to target areas where drivers are prone to violate the law.

"We've been aggressive with motorists from day one," Sheriff Champagne said, "because even one death caused by a speeder or drunk is too many. Our efforts are focused toward getting drunken drivers off the roads and residents to slow down."

Since 1995, the number of vehicular fatalities has fallen from 32 to 10 in 2000, while the number of injuries is down from 415 in 1995 to 167 last year. DWI arrests, on the other hand, more than doubled from 104 in 1995 to 220 in 2000.

For two years, 1998-2000, the department was awarded STEP



Sheriff Greg Champagne is pictured with the latest addition to the SCPSD's Patrol Division: four fully-equipped Harley Davidson motorcycles. The cycle patrol, which is led by Cpl. Morris Cavaliere (far right), includes Sgt. Mike Folse, Deputy Robert Villere and Cpl. John Champagne. Also pictured, second from left, is Chief Deputy Joseph Cardella, who along with the Sheriff, completed the department's 2 1/2 week motorcycle training course.

funding to help combat aggressive and impaired driving. The monies paid traffic task forces to patrol en force during holiday weekends.

"Our success has come at a price," Sheriff Champagne said. "Because our numbers have improved so dramatically, the department no longer qualifies for STEP funds."

Despite the cuts, the Sheriff continues to order heightened patrols around the parish. "We're going to stick with what works," he said. "The added patrols work, so whether we have STEP money or it comes out of the department's budget, we're going to continue to be out there enforcing the law."

Another facet to the Patrol

Division - a motorcycle unit - was added in December 2000.

"The bikes bring an added dimension to our community policing effort," Sheriff Champagne said. "Because our rural areas and some of our narrower, shorter streets are more easily accessible on the Harleys, we've increased our visibility and patrols around the parish. The main thing I'd like to see is people slowing down on the parish's roadways and obeying traffic signs."

The motorcycle patrols also assist at special events, the Sheriff said.

Patrol decoys - units manned by CPR dummies - have also been strategically placed around the parish to slow down drivers.

Volunteers help clean Allemands waterway

Spring Cleaning on Bayou hauls in 2 1/2 tons of trash

The second annual Spring Cleaning on the Bayou netted abandoned boats, household appliances, and assorted trash from Bayou Des Allemands.

Sheriff Greg Champagne was joined by volunteers in about 20 boats in early March as they cleaned along the shoreline.

"Our parish is known for its inviting waterways. People travel from all around to visit and fish this region," Sheriff Champagne said. "Unfortunately, the bayous also attract litter-bugs. We don't want visitors to leave with the impression that St. Charles Parish is an ideal dumping ground."

The volunteers combed the banks of the Bayou throughout the day, gathering trash and discarded items.

In all, five dump trucks full of trash - more than 5,000 pounds - was taken to the landfill. Fourteen discarded boats, 12 refrigerators, three water heaters and a baby carriage were also pulled from the murky water.

"It's amazing that someone would dump trash here without a second thought," the Sheriff said. "It's going to take vigilant reporting of those violators to keep this bayou clean."

People illegally dumping trash should be reported to the SCPSD at 783-6807.



A SCPSD deputy pulls an abandoned refrigerator ashore.

Sheriff's Dept. deputies graduate from Nicholls State

Five SCPSD officers first to complete department's continuing education program

Five St. Charles Parish deputies were awarded associate degrees in criminal justice from Nicholls State University in May. They are Capt. Patrick Yoes, Lt. Robert Dale, Sgt. Mark Candies, Cpl. Patrick Beard and Melissia Dempster Theriot.

The deputies are the first to complete a program instituted by Sheriff Greg Champagne in Spring 1997. It is designed to help law enforcement officers earn an associate or bachelor's degree in criminal justice or government.

"I initiated this program to help our deputies that wanted to continue their schooling," Sheriff Champagne said. "The added education can only benefit the department and the parish."

Over 50 SCPSD deputies have enrolled in classes since the program's inception.



Sheriff Greg Champagne is shown with the department's latest graduates: Melissia Dempster Theriot, Lt. Robert Dale, Sgt. Mark Candies, Cpl. Patrick Beard, and Capt. Patrick Yoes.

"I look forward to seeing many more deputies graduate in the coming semesters," the Sheriff said.

In exchange for paying their tuition, deputies are asked to sign an agreement to stay with the department for one year for each semester he or she is enrolled.

Officers must also maintain a minimum grade point average.

"These deputies are to be commended for their tireless dedication to pursuing a degree while continuing to serve the community," the Sheriff said. "I'm proud to see the program working so well."



Departmental Enforcement

New era dawning in local law enforcement

A Glimpse Inside the Prison



Contractors are working hard to complete the jail for the June 15 dedication ceremony.



From this second floor vantage point, guards will control inmates' movement in the tiers.



Meals for 590 inmates will be prepared daily in this kitchen.



Inmates will talk to guests and appear before a judge via video. Monitors are installed in the walls, and are protected by plexiglass.

Correctional Center provides efficient design, room for expansion and space for rehab programs

The St. Charles Parish Sheriff's Dept. enters a new era in law enforcement with the opening of the Nelson Coleman St. Charles Parish Correctional Center in Killona.

The 92,000-square-foot, state-of-the-art facility will house minimum-, medium- and maximum-security male prisoners, as well as females. It was designed to hold 590 beds.

Following visits from the state's Dept. of Corrections, Dept. of Health, and the Fire Marshal, the parish will begin moving prisoners into the facility, said prison warden Major Roland Ladreyt.

Roy Anderson Corp. served as contractor on the \$13.4 million project. Situated on 62 acres, the smoke-free facility was designed with expansion in mind.

"Everyone knows by now what a struggle it's been every day to find space to house this parish's inmates," said prison warden Major Roland Ladreyt.

The 119-bed facility in Hahnville has operated over capacity for over 12 years. To compensate, the Sheriff's Dept. pays neighboring parishes \$21 per day to house the overflow – 30 inmates monthly on average.

"The Killona facility was designed to get us through the next 25 years," Ladreyt said. More pods can easily be added, if needed, increasing the bed count by 1,200 beds without affecting the infrastructure.

"This center will completely change the complexion of law enforcement in St. Charles Parish," he said.

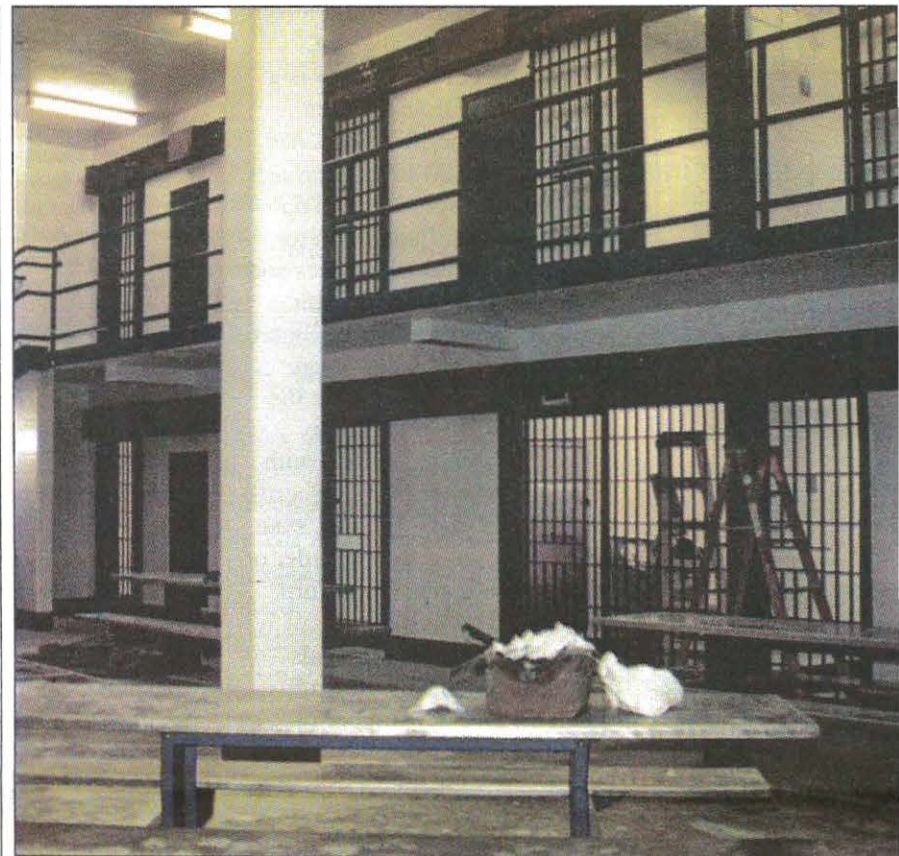
In addition to having the needed bed space, the new center has room to incorporate rehabilitative programs.

"Prisons are often thought of as a means to separate offenders from society," Ladreyt said. "Certainly, it is an aid in decreasing crime, but we would like to offer programs to help change lives as well. We want to help provide the skills needed to keep these men and women from returning."

Ladreyt said prisoners will be offered an opportunity to earn a GED, as well as basic lifeskill classes, which will range from filling out applications to going on a job interview.

As funds become available, Ladreyt said the program could be expanded to include training in gardening and landscaping, food service preparation, and auto mechanics. "We've heard from people in the community interested in offering classes to help the inmates once they are released," he said.

Access to a drug rehabilitation program will also be provided. Sheriff Greg Champagne con-



"Make no mistake, this is not a Hilton for prisoners," Sheriff Greg Champagne said of the \$13.4 million state-of-the-art facility. Inmates sleep, eat and even converse with visitors from inside their assigned tiers. Pictured above is a minimum-security tier. The correctional center also includes maximum- and medium-security tiers.

tracted earlier this year with St. Charles Parish Hospital to provide on-site medical care to inmates.

Pending the facility's opening, the Sheriff's Dept. hired 28 correctional officers. An additional 35 are currently completing law enforcement academy, and will be on staff full-time pending graduation in July.

Structurally, the correctional center is comprised of three pods: maximum-security, which will house 120 inmates in heavy, lock-down units; medium- and minimum-security, which will hold 196 prisoners each; and a half-pod for women.

The dorm-style women's quarters will hold up to 78 prisoners.

The cells are arranged within the pods so as to allow one deputy to watch as many as 196 prisoners at a time.

Although the new facility will house the Corrections Division and related operations, many of the department's community services will remain at the Parish Courthouse.

Citizens will still be able to access Bonds & Fines, Records, Crime Scene, and Special Services at the Hahnville site.



Special Features

- 590-Bed Facility
- Two-Story Concrete Facility
- Cost-Effective to Operate
- Room For Expansion
- Video Conferencing
- Video Visitation
- Large Medical Area
- Educational Programming
- Religious Services
- Drug Rehabilitation
- Expanded Trustee Program
- Community Project Initiatives
- Department of Corrections Inmates Off-Set Expenses

Video to limit face-to-face contact

High-tech video-conferencing will replace the old reach-out-and-touch method of visitation at the parish's new correctional center.

Inmates and visitors will communicate only through a video system. Face-to-face visits will not be allowed.

Visitors will be seated at a bank of video kiosks. On the display, the inmate will appear. Likewise, from a similar kiosk in his or her tier, the inmate will view his guest. The two will converse via a telephone handset.

"Similar systems have been used in prisons around the country with good results," said Major Roland Ladreyt, prison warden.

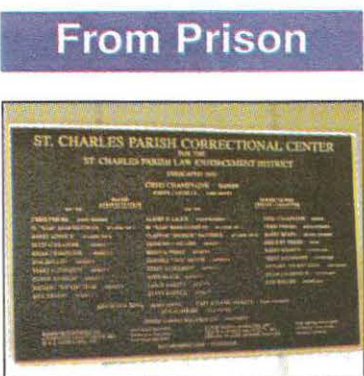
Prisoners will also be arraigned via a video connection between the Killona jail and the judges at the Parish Courthouse in Hahnville. Inmates will still have to travel to Hahnville for all motion hearings and trials.

Because inmates no longer have to be escorted to a visitation area – or monitored once they are there – the process is less time consuming, less demanding on manpower, and limits contraband coming into the prison, Ladreyt said. It should also allow more flexibility in visiting hours.

With the video system, the inmate will be notified he has a guest. "He'll just walk over to the video monitor to talk," Ladreyt said.



From one of these video booths, visitors will be able to talk with inmates. The inmate's image will be projected on the screen. A similar video connection has been installed inside each of the prison tiers.



A plaque outside the center recognized those instrumental in the prison's construction.



A painter puts finishing touches on a railing in a maximum-security tier.

Prison named for former deputy

□ Nelson Coleman to be second officer memorialized by Sheriff's Dept.



SCPSD DEPUTY NELSON COLEMAN

Killed Nov. 5, 1982 in the line of duty

Deputy Nelson Coleman died in the line of duty on Nov. 5, 1982. The 13-year veteran of the SCPSD suffered a massive heart attack while attempting to arrest a suspected felon.

On June 15, the department will honor his dedication and compassion, naming the parish's correctional center in his honor.

As Deputy Coleman served a felony warrant to a suspect, a scuffle ensued. During the struggle, the deputy experienced severe chest pain and died.

Deputy Coleman was the third

SCPSD officer to die in the line of duty. He preceeds Sheriff Lewis Ory, who was killed in 1903 while pursuing a suspect, and Deputy James Allen Arterbury, for whom the Arterbury government complex in New Sarpy is named, was shot in 1973 with his own gun while trying to stop a bar fight.

Coleman is survived by a wife and three children. His memory is also honored at the National Law Enforcement Officers Memorial in Washington, D.C., on panel 44W-18.



The laundry room is equipped with industrial-sized washers and dryers.



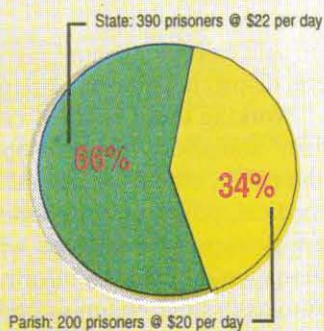
A ground-floor view of a medium-security tier.

Built with no new taxes

Innovative DOC agreement saved taxpayers

PRISON POPULATION BREAKDOWN

590-bed, \$13.4 million Correctional Center

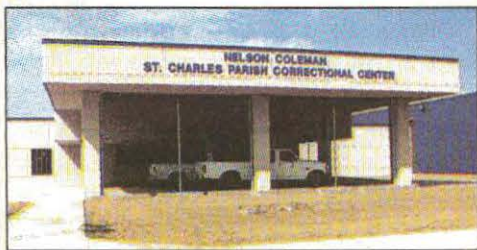


Construction Cost:

Projected: \$13,149,500

Actual: \$13,404,411*

*New state fire safety requirements and modifications by the Dept. of Health accounted for the price increase.



□ \$13 million prison to be operated with state per diem

No new taxes were required to build the 600-bed, state-of-the-art correctional center in Killona. Likewise, an agreement with the state Dept. of Corrections will offset more than half the estimated \$6 million yearly operating cost.

Construction of the facility was funded with 20-year bonds, which the department will repay with monies collected from housing state DOC inmates.

The department pays law enforcement

agencies \$22 daily per prisoner to cover inmates' board and health care. The new prison facility will house approximately 390 state prisoners.

In addition, the parish pays \$20-a-day to house local prisoners.

"Four years ago, I promised St. Charles residents to find a way to build a prison without raising taxes," Sheriff Greg Champagne said. "I'm proud to say we've made that happen."

Projected to cost \$13.150 million to build, construction ran slightly over, actually costing \$13.404 million, said Major Sam Zinna, who oversaw the prison project.

"We ran into a bit of unexpected added costs when the state Dept. of Health modified some design aspects and the Fire Marshal required changes to the fire alarm and sprinkler system," Zinna said.

The increases account for less than a 5% increase in the construction project, he noted.



The prison has three outdoor recreation areas, one for women, one for men in maximum security, and one for men in medium and minimum security.

Departmental Partnerships

Group buys vests for K-9s

□ Humane Society raises money for two bullet-proof vests

Proceeds from the Howl-in-One golf tournament and Howl-in-ween costume party in October 2000 benefited the SCPSD's K-9s.

The event was held by the St. Charles Parish Humane Society in order to raise funds to buy bullet-proof vests for two of the department's canines, Tigo and Luke.

The three-pound, \$650 vests are made of the same materials as the vests worn by police officer. They are designed to protect the animal against knife attacks and bullets.

"These vests also protect the dogs against the most common K-9 injury: blunt trauma from a kick, punch or a blow with any object," said Lt. Ricky Oubre, commander of the K-9 Unit. "The padding can prevent a bad bruise and potential broken ribs or even a puncture wound," he said.



Luke, one of four Belgian Malinois' on the SCPSD's K-9 Unit, is pictured with Cpl. Conrad Bernard. The dogs are used to apprehend criminals and detect narcotics.

6.

Grateful family visits 911 Center

□ Bouquet a 'sweet' gift for saving grandmother; caller, 911 dispatcher united

It was a typical Sunday evening at the Duhon's New Sarpy home. In the living room, 78-year-old Helen Holley was watching "Who Wants to be a Millionaire?" while her granddaughter Alexis, 6, cooked Raman noodles in the kitchen. Just down the hall, Holly Duhon was online, tabulating her income taxes.

The calm was shattered when Alexis returned to the sofa to seek her grandmother's help opening the noodle-seasoning packet. After numerous attempts to wake her "sleeping" grandmother failed, Alexis ran to her mother.

"She told me Grandma wouldn't wake up. I immediately ran in and found her," Holly Duhon said. Mrs. Holley was unconscious. "I shook her and felt for a breath, but she didn't react. That's when I grabbed the phone and dialed 911."

But, at that moment, Holly completely forgot that she was still connected to the Internet. The 911 call wouldn't go through.

"I ran to the neighbor's house and asked him to call," she said. Luckily, he followed her back and was later able to help move Mrs. Holley to the floor.

Dispatcher Ursula Kelly, 42, of Ama, received the distress call at the parish's 911 Center in Hahnville. "Clearly Holly was shaken and scared," Kelly recalled. "But it was important that we act quickly because Mrs. Holley was in respiratory failure."

As a member of the 911 dispatch team directed deputies and an ambulance to the address, Kelly employed the Advanced Medical Priority System to offer Mrs. Holley immediate aid.

"When I heard that the grandmother wasn't breathing, I blocked out everything that was going on around me and started working that call," Kelly said. The flip card system provides step-by-step instructions for those on the scene. Based on answers given to simple questions – i.e., "Is the person breathing?" "Is the airway clear?" etc. – the dispatcher is able to talk the caller through basic medical steps he or she can provide until EMS arrives.

For Holly, the challenge was immense. "I'm a chicken and my whole family knows it," she said. "Everything happened so fast; I just remember telling the 911 operator that I couldn't do it."

It wasn't the first time Kelly had encountered a caller who was timid about performing CPR. "One of the things we're



911 Dispatcher Ursula Kelly, left, gets a hearty hug from Brenda Blakley, center, and Holly Duhon. During an emergency call, Kelly and Duhon are credited by doctors with saving the life of Duhon's grandmother Helen Holley.

taught during our training is to be reassuring and authoritative. I just kept telling her she could do it. In the end, Holly was the courageous one. She helped keep her grandmother alive."

With the neighbor's help, Holly began CPR. "I'd taken classes in CPR when my son Colby (now 3) was born," she said. "CPR on an adult is completely different, but the process – 15 pumps and breathe, 15 pumps and breathe – came back."

Six minutes after the initial call EMS workers arrived at the Duhon home. After shocking Mrs. Holley back to life with a defibrillator, she was transported to St. Charles Parish Hospital where she received emergency care in the ICU.

"The doctors treating her told us that she was alive and hadn't suffered significant brain damage only because of the immediate care she got moments after the initial cardiac arrest," Mrs. Holley's daughter, Brenda Blakley, said.

On Valentine's Day, Feb. 14, Mrs. Holley was released from the hospital pending additional medical tests. That same day, Blakley and Holly Duhon visited the 911 Center to deliver a candy bouquet to dispatcher Kelly.

"Without you, she wouldn't be alive today," Blakley said during the tearful meeting. "From the bottom of my heart I thank you for all you did. Without you, we wouldn't have this extra time with her."

Although Mrs. Holley isn't completely out of the woods medically, her family has had the opportunity to reflect on its many blessings. They continue to commend

young Alexis for her bravery. "I thank God she couldn't open the seasoning packet," Mrs. Blakley said. "If she had've, we might not have discovered my mother in time."

And the incident has given cause to celebrate Holly Duhon's courage. "I see the shows about amazing rescues on TV all the time, but I never thought I would be in a similar situation," she said. "I'll encourage everyone to use 911 in emergencies. Even if you don't think the situation is that significant, the dispatchers can help."

It's the immediate help that makes 911 services so vital, said 911 Center Director Vanessa Johnson. "EMS was dispatched 8:09 p.m. and arrived at 8:15 p.m. – that's a six-minute response time. But our response time was zero. When the call came in, we began helping."

Johnson said before manning the 911 computers, dispatchers receive hours of training. "Working these kinds of calls is team effort," she said. While one operator talks to the caller, others are dispatching needed medical, police and fire assistance. "Sometimes callers get frustrated with all the questions we ask, but the information is needed to assess the victim's condition and to begin offering medical help."

The visit was a treat for dispatchers. "We rarely meet the people on the other end of the phone," Johnson said of the visit. "This has been a wonderful experience. For all the times we weren't able to do enough to keep the person alive, the times it does work makes what we do worth it."

TRIAD joins deputies, local seniors

Program's success hinges on protection, education of elderly

Our "golden years" should be spent relaxing and enjoying life, not living in constant fear of scam artists and criminals. St. Charles Parish's TRIAD, a program specifically for the community's senior citizens, is turning the tables on elderly crime.

Now in its fourth year, the program unites the St. Charles Parish Sheriff's Dept., the St. Charles Council on Aging and local home health agencies, as well as concerned citizens. TRIAD's mission is to protect and assist our community's elderly residents.

Several community outreach programs and senior events have been held. At each, local service providers offer tips and materials aimed at keeping seniors healthy and safe.

"Globally, our society is growing older, and protecting our community's senior population is a major concern," said Sheriff Greg Champagne. "TRIAD provides the means for us to stay connected with and meet the needs of senior citizens."

The TRIAD concept is based on a simple belief: when law enforcement and senior service providers pool their efforts, the community's seniors will receive better programs and enhanced services.

TRIAD meets monthly at the St. Charles Parish Courthouse in Hahnville. Also, events focusing on crime prevention are held quarterly on the east and west banks of the parish.

The next TRIAD Community Meeting will be held this summer at the St. John



TRIAD members unveiled 10 signs proclaiming St. Charles Parish 'A TRIAD COMMUNITY.' The signs are posted on the east and west banks of the parish. Pictured are Sheriff Greg Champagne, Ole Krasts, Theresa Theriot, Buddy Graver, Roy Lunk, Alceste Arabi, Madeline De Harde, Margaret Powe, Kirkland Green, Harry Zeller Sr., Virginia Albert, Bob Derveloy, Victor De Harde and Judy Fielder.

the Baptist Church in Paradis. Seniors from the Paradis/Bayou Gauche/Des Allemands area are invited to attend.

In September, TRIAD will host a Community Meeting in St. Rose. The exact site and date should soon be announced. TRIAD's annual Senior Day, which attracts over 350 senior citizens, will be held in October.

TRIAD is open to seniors throughout St. Charles Parish. Through cooperative education, mutual awareness and community-wide participation, the program promotes crime prevention, citizen awareness and assistance to victims.

"Many times, seniors have no idea where to turn when faced with a crisis or situation," the Sheriff said. "By familiariz-

ing them with the many programs and services available in St. Charles Parish, we can have a positive impact."

With input from local seniors and TRIAD's S.A.L.T. (Seniors and Lawmen Together) board, the SCPSD has developed several beneficial programs. Operation Quick Response, 911 Flashlite, Adopt-a-Senior and File of Life are among these.

The public response to TRIAD's programs has been overwhelming. Since its inception in April 1997, over 8,000 Files of Life have been given out.

Seniors may receive more information on TRIAD or available services, contact TRIAD Coordinator Judy Fielder at (985) 783-1355.

Are you safe from scams? Take the test...

TRUE OR FALSE

1. It's easy to detect a fraud or con because there are only so many tricks a con artist can use.
2. Someone who calls you asking for funds for a charity is probably telling the truth.
3. Most research survey callers are legitimate, so you can feel confident in answering their questions.
4. A phone number with an 800 area code is free to the caller. However, a 900 phone call is not free.
5. A person with a business card or other type of identification would not be a con artist.
6. Once you have been conned out of money, there is nothing you can do.
7. One way to avoid home repair cons is to ask contractors for the names of people who have had the same type of work done. Call them for references.
8. Bank officials may ask you to withdraw cash to help catch a counterfeiter.

Anyone can fall victim to a scam. Seniors make easy targets because many are retired and can be easily reached at home; many have money; some may feel isolated and lonely; and some may have difficulty with memory or thinking skills.

Con artists know and, often, take advantage of this.

If you do fall prey never be embarrassed to report fraud; anyone can be a victim. By reporting the incident to the Sheriff's Dept., you can help prevent the perpetrator from victimizing anyone else.

So, how much do you know about con games? Here are the answers to the quiz...

1. **False.** The number of cons, and the new twists on them, are limitless. Always be on the alert.

2. **False.** Many requests for money from charities or religious causes are not legitimate. Ask to see a financial statement

before deciding to donate.

3. **True.** Most research surveys are legitimate. In any survey, refuse to answer questions that seem unusual or too personal.

4. **True.** Many people don't realize that they have to pay for making a call to a 900 number. The charges can be very expensive.

5. **False.** Anyone can have a business card printed. If someone approaches you unsolicited, don't automatically believe their identification.

6. **False.** There are several things victims of cons and frauds can do. Always contact the proper authorities.

7. **True.** There are several things you can do to check on contracts. Get references and follow up on that information.

8. **False.** A bank official would never ask you to withdraw money to help catch a counterfeiter.

- To be removed from pre-screened credit card company offers, call 1-888-567-8688.
- To be removed from marketing lists, call the Credit Bureau Experian at 1-800-407-1088.
- To remove your name from many national direct-mailing lists or to avoid unwanted telemarketing phone calls, contact: DMA Mail Preference Service, P.O. Box 9008, Farmingdale, NY 11735-9008. Be sure to include your name, address, and phone number.

TRIAD services available

File of Life

A proven lifesaver, this free mini-medical provides emergency workers with vital medical/personal information. A notification sticker should be attached near your door and the red packet kept current and placed on your refrigerator.



Operation Quick Response

Developed to speed emergency response time, TRIAD volunteers



spray-paint stenciled house numbers on the homes, driveways or fences of area senior citizens.

9-1-1 Flashlite

For just \$7, seniors can turn a regular light into a flashing signal for emergency response teams. The flashing light serves as a signal for neighbors, scares away would-be prowlers, and helps deputies find your home quickly in an emergency.



Adopt-a-Senior

This program teams deputies with seniors with special needs. It ensures seniors' needs are monitored and referrals are made.



For more information, contact TRIAD Coordinator Judy Fielder at 783-1355.

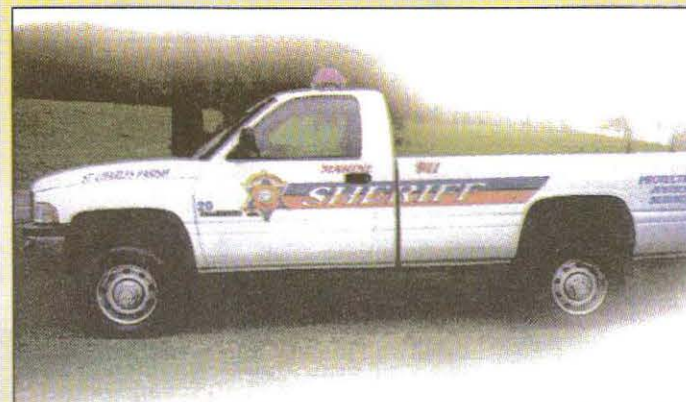


28 graduate from Academy



Sheriff Greg Champagne recently announced the latest recruits to graduate from Law Enforcement Academy. The deputies attended Lafourche Parish's satellite academy, which was held at the SCPSD Training Division in Destrehan. Classes taught included report writing, accident report writing, juvenile and Louisiana law, community policing, felony procedures, hand-to-hand defensive tactics, corrections procedures, and other law enforcement issues. The graduates are assigned to the Corrections Division. They are: Daniel April, Terence Bechet, Ronald Brown, Dennis Buschbaum, Corey Cooper, Danell Dallan, Gregory Hokkenen, Daniel Howell, Monica Johnson, John Jones, Richard Knobloch, Clint LeBlanc, Joseph Lemoine, Stacy Maloney, Clint Marcello, Connie Mitchell, Lance Naquin, Louise Nicholson, Sylvest Oubre, Carrin Perry, Jeremy Pitchford, Brad Poirier, Alfredo Ramirez, James Robertson, Benjamin Schmitt, Timothy Shannon, Angel Turner and Robert Weber.

Award-winning look



The St. Charles Parish Sheriff's Dept. was awarded honorable mention among sheriff's agencies in Law and Order Magazine's 2000 International Police Vehicle Design Competition. The contest, which is co-sponsored by 3M, is open to law enforcement departments around the globe. The vehicle detailing was developed by Crescent Decal Specialist, Inc., a Kenner-based company, which produces the decals on computer. The design was selected to provide high visibility at night. The contest judges said of the detailing, "The striping is an attention-getter, and the inclusion of Protection, Justice and Service helps emphasize the department's work with the community." As new vehicles and equipment are added to the SCPSD's fleet, they are outfitted with the new decals. "We're proud of the new look," said Sheriff Greg Champagne. "It reflects our department's outgoing, progressive attitude."

HHS Scholar awarded

Guille Isabel de Vega, daughter of Rafael and Deborah de Vega of Luling, is the recipient of a \$500 academic scholarship from the Louisiana Sheriff's Scholarship Program. A 2001 graduate of Hahnville High School, she will attend Louisiana State University in the fall to pursue a degree in environmental engineering. The state Sheriffs' Honoree Membership Program awards scholarships to one resident from each of the state's 56 parishes. "The scholarship program affords sheriffs a means of investing in Louisiana's future," said Sheriff Greg Champagne, who is pictured awarding de Vega the scholarship.



Still time to register for camp

Boys ages 12-15 can still register to attend the annual First Class Sheriff's Camp, which will be held July 15-21 at Camp Salmen in Kiln, Miss.

The seven-day camp promotes trust and interaction between the parish's youth and the Sheriff's Department.

"Campers and deputies have raved about this experience," said Sheriff Greg Champagne. "The camp provides boys the opportunity to enjoy the outdoors, make new friends, and develop new skills. Along the way, they gain self-confidence and better communication skills. For many of the boys, it's the first time they've ever been camping." The event is made possible through a part-

nership between nine sheriffs from South Louisiana and the New Orleans Council of Scouts of America.

In addition to the usual outdoor camping fare, boys will be exposed to instructional educational skills, career education, values and ethics building, and leadership development to help combat violence and crime.

The Sheriff's Dept. pays the expenses for boys who attend. Space is limited.

Applications for the Sheriff's Camp are available at the Special Services Division located at the Parish Courthouse in Hahnville. For more information, contact Lt. Dwayne LaGrange or Cpl. Burley McCarter at 783-1355.

Night Out Against Crime set for Aug. 7

On Tuesday, Aug. 7, from 7-10 p.m., residents throughout St. Charles Parish are invited to join forces with thousands of communities nationwide for the 18th annual National Night Out crime and drug prevention event.

National Night Out is designed to heighten crime and drug prevention awareness; generate support for, and participation in, local anti-crime efforts; strengthen neighborhood and police-community partnerships; and to send a message to criminals letting them know neighborhoods are organized and are fighting back.

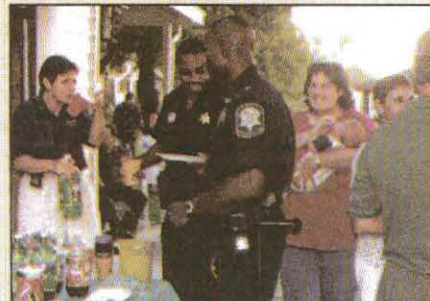
"This is a perfect opportunity to plan a block party, meet your neighbors and take a stand against



crime," Sheriff Champagne said. "Neighbors watching out for neighbors is our best first defense in fighting crime."

If your neighborhood is interested in organizing an event, contact Lt. Dwayne LaGrange at 783-1355 for more information.

Activities for National Night Out run the gamut, ranging from neighborhood cook-outs to simply turning on an outdoor light to show support.



Send your gift home

Sheriff's Department employees enthusiastically gave to the United Way of St. Charles, increasing contributions for the fourth consecutive year.

By designating the parish's United Way agency as the recipient of your pledge, you can ensure that neighbors like you will receive crucial services in their time of need.

Unless you designate St. Charles Parish, your gift will go to the parish in which your office campaign is held.

Please, send your gift home to the United Way of St. Charles.



8.



Want more information on the services or programs offered by the St. Charles Parish Sheriff Department? Whether you're seeking a listing of divisions, services, a brief history of the department, or wish to register your bicycle, you can find it on the World Wide Web. Visit us today at: www.stcharlessheriff.org.

